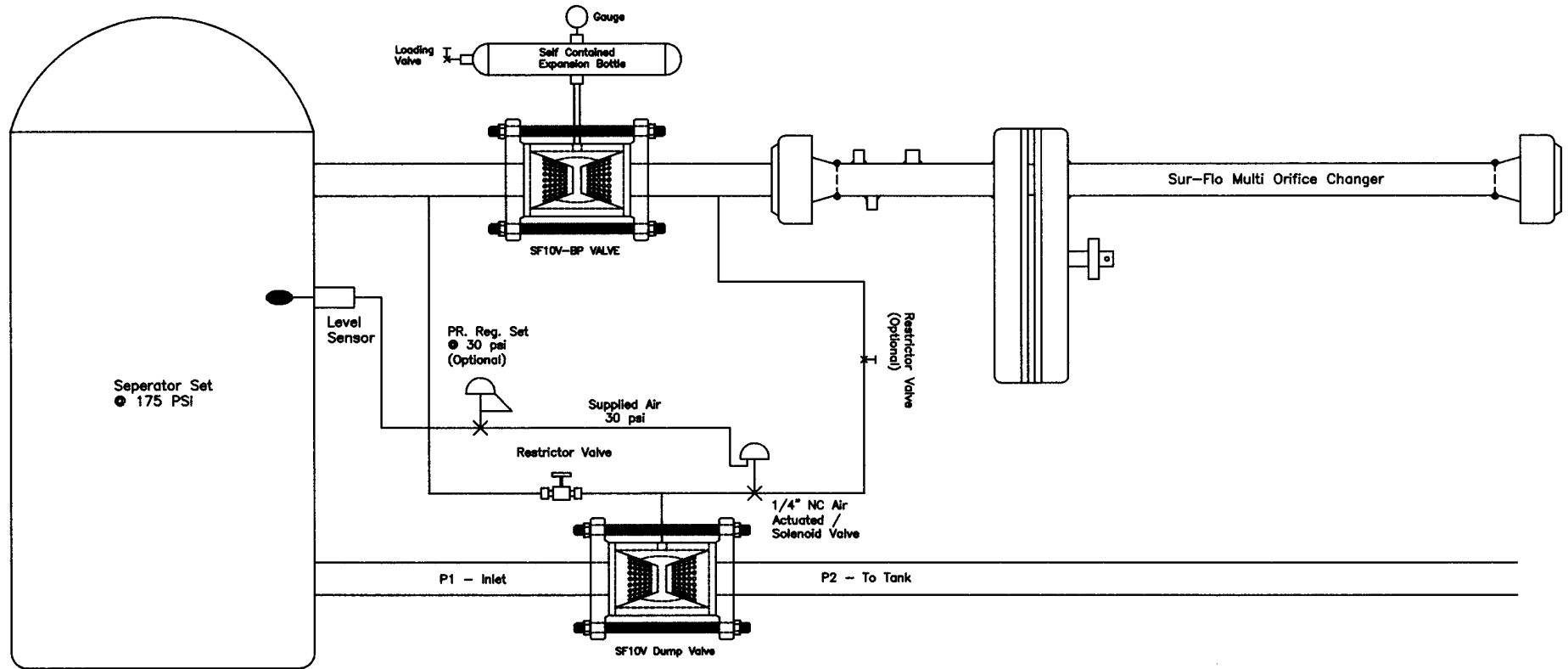


PRINCIPAL OF OPERATION AND COMMISSIONING:

The SF10V valve has an ease-in style housing that is installed in line between two flanges. The sensing lines are then attached to the P1 & P2 flow lines (or can be installed as shown in diagram). The P1 sensing line should be installed ten pipe diameters upstream of the valve and the P2 sensing line five pipe diameters downstream of valve.

The 1/4" normally closed air actuated valve receives a 30 psi signal to operate. While the actuated valve is closed, all the process pressure dumps into the charge chamber locking the SF10V Valve up 100% bubble tight. As the actuated valve receives a signal from the level sensor to open, the pressure in the charge chamber is able to bleed down and allow flow through the SF10V Valve. The restrictor valve is used to fine tune the system to flow and operate as per your requirements. The restrictor valve should be opened approximately one turn at startup and can be fine tuned once the system dumps.

Note: An optional Restrictor valve can be used down stream of the 1/4" Actuated Valve if gas flow is to high.



TOLERANCES UNLESS OTHERWISE STATED
 .X ±0.100"
 .XX ±0.030"
 .XXX ±0.015"
 SURFACE FINISH 63 Ra
 ALL DIMENSIONS ARE IN INCHES
 BREAK ALL SHARP EDGES

| REV | DESCRIPTION |
|-----|-------------|
| | |
| | |
| | |
| | |

MATERIAL:

SUR-FLO METERS & CONTROLS LTD
 CALGARY, ALBERTA

| | | | |
|--------------------|-------------|--------------------------------|-----------|
| SCALE NTS | APPD. | TITLE: Dump Valve Schematic | |
| DATE Mar 26, 02 | DRN. D.N | DWG. NO SF10V DV | REV. 0 |